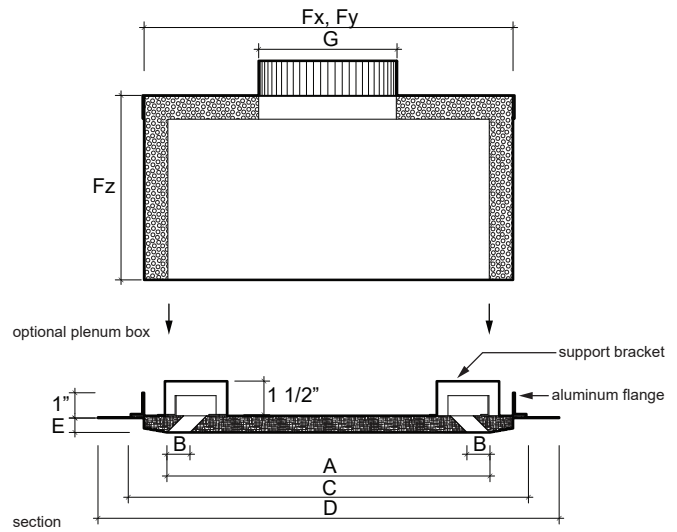
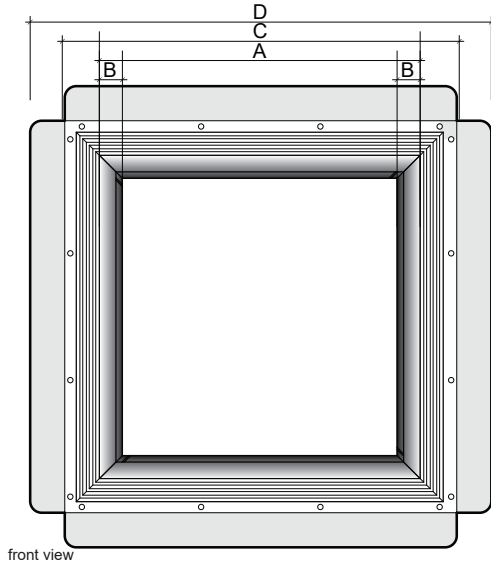




MODEL S100

ARCHITECTURAL SQUARE DIFFUSERS: 1 SLOT 45° OPENING
FLUSH MOUNT, TAPE AND SPACKLE INSTALLATION

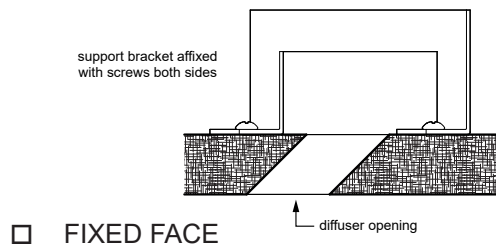


PRODUCT DIMENSIONS

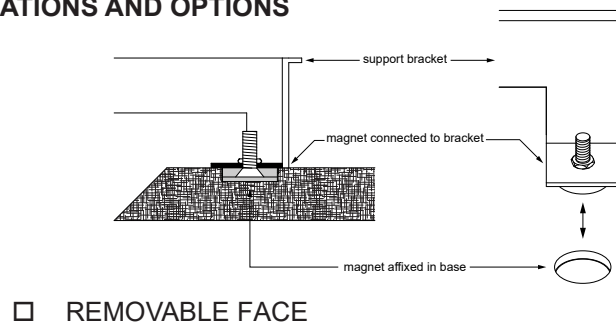
	PRODUCT CODE	(A) DIFFUSER OPENING	(B) SLOT WIDTH	(C) REQ. CEILING FRAME OPENING	(D) OVERALL PRODUCT DIMENSIONS	(E) GYPSUM BOARD THICKNESS	(Fx, Fy) STANDARD PLENUM BOX DIMENSIONS
<input type="checkbox"/>	S0601075	6" x 6"	3/4"	10.5" x 10.5"	13" x 13"	UP TO 5/8"	8" x 8"
<input type="checkbox"/>	S0801075	8" x 8"	3/4"	12.5" x 12.5"	15" x 15"	UP TO 5/8"	10" x 10"
<input type="checkbox"/>	S1001088	10" x 10"	7/8"	14.5" x 14.5"	17" x 17"	UP TO 5/8"	12" x 12"
<input type="checkbox"/>	S1201088	12" x 12"	7/8"	16.5" x 16.5"	19" x 19"	UP TO 5/8"	14" x 14"
<input type="checkbox"/>	S1801100	18" x 18"	1"	22.5" x 22.5"	25" x 25"	UP TO 5/8"	20" x 20"
<input type="checkbox"/>	S2401100	24" x 24"	1"	28.5" x 28.5"	31" x 31"	UP TO 5/8"	26" x 26"

DIFFUSER SPECIFICATIONS AND OPTIONS

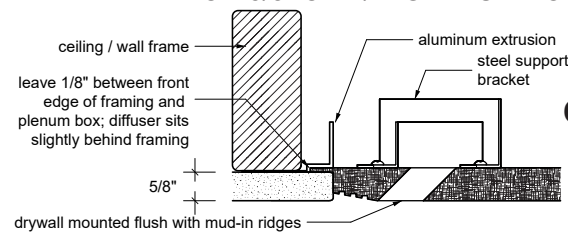
1) DIFFUSER FACE IS FIXED OR REMOVABLE



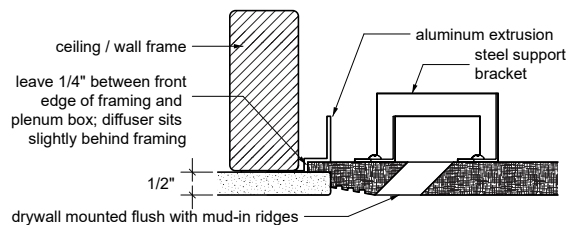
OR



2) DIFFUSER IS MADE FOR 5/8" OR 1/2" GYPSUM BOARD



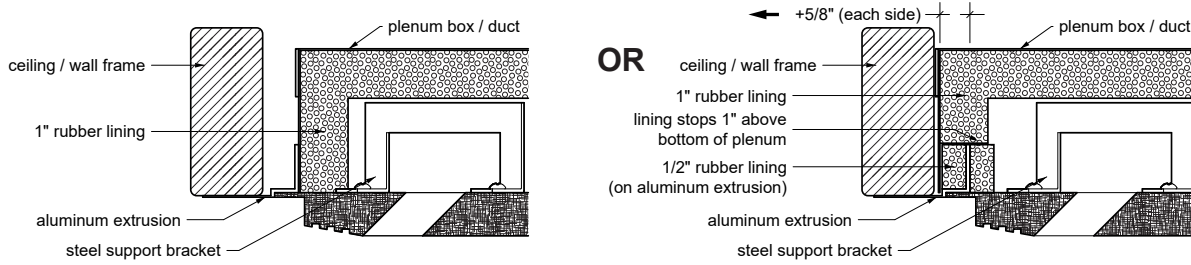
OR





MODEL S100
ARCHITECTURAL SQUARE DIFFUSERS: 1 SLOT 45° OPENING
FLUSH MOUNT, TAPE AND SPACKLE INSTALLATION

3) DIFFUSER INSTALLS INSIDE OR OUTSIDE OF PLENUM BOX



- STANDARD DIFFUSER-OUT INSTALLATION DIFFUSER-IN INSTALLATION (ADD 2.25" TO Fx AND Fy)

DIFFUSER ORDER DETAILS

PRODUCT CODE	DIFFUSER OPENING	QTY	DIFFUSER FACE FIXED OR REMOVABLE (SPECIFY)	(E) GYPSUM BOARD THICKNESS (SPECIFY)	NOTES / OTHER SPECS
S0601075	6" x 6"				
	6" x 6"				
S0801075	8" x 8"				
	8" x 8"				
S1001088	10" x 10"				
	10" x 10"				
S1201088	12" x 12"				
	12" x 12"				
S1801100	18" x 18"				
	18" x 18"				
S2401100	24" x 24"				
	24" x 24"				

OPTIONAL PLENUM BOX ORDER SPECIFICATIONS *

* THE TABLE BELOW SHOULD BE FILLED OUT IF YOU WISH TO PURCHASE PLENUM BOXES FROM INVI

** ADD 2.25" TO Dx AND Dy OVER STANDARD DIMENSIONS IF YOU CHOSE DIFFUSER-IN INSTALLATION

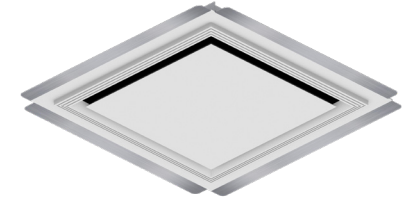
(Fx) ** PLENUM LENGTH	(Fy) ** PLENUM WIDTH	(Fz) PLENUM HEIGHT (SPECIFY)	QTY	DUCT CONNECTION TYPE	(G) COLLAR SIZE	COLLAR LOCATION (TOP / SIDE)	NOTES / OTHER SPECS

CLIENT	
PROJECT	
ADDRESS	
INVOICE / PO #	
PREPARED BY	

InviAir
 67 Guernsey St
 Brooklyn, NY 11222
 917-909-0343



PERFORMANCE DATA
INVAIR 1-SLOT SQUARE DIFFUSER, 45° OPENING



ALL PERFORMANCE DATA FROM TESTING CONDUCTED BY
 INTERTEK GROUP, IN ACCORDANCE WITH ASHRAE 70-06

DIFFUSER SIZE	AREA FACTOR (Ak)	PARAMETERS	PERFORMANCE					
8" x 8"	0.067	VOLUME (CFM)	22	67	89	111	133	156
		STATIC PRESSURE (in. w.g.)	.005	.037	.064	.098	.139	.186
		NOISE CRITERIA	<15	<15	<15	<15	19	22
		THROW (ft. at 50 / 100 / 150 fpm)	7 / <2 / <2	12 / 8 / 5	14 / 10 / 7	16 / 12 / 9	18 / 14 / 11	19 / 15 / 12
12" x 12"	0.118	VOLUME (CFM)	50	100	150	200	250	300
		STATIC PRESSURE (in. w.g.)	.009	.033	.071	.121	.183	.257
		NOISE CRITERIA	<15	<15	<15	22	29	34
		THROW (ft. at 50 / 100 / 150 fpm)	8 / 2 / <2	10 / 5 / 3	13 / 9 / 5	15 / 11 / 8	17 / 14 / 9	18 / 16 / 11
18" x 18"	0.288	VOLUME (CFM)	113	225	338	450	563	675
		STATIC PRESSURE (in. w.g.)	.013	.049	.106	.185	.287	.411
		NOISE CRITERIA	<15	15	30	40	49	>50
		THROW (ft. at 50 / 100 / 150 fpm)	9 / 2 / <2	12 / 6 / 3	14 / 10 / 6	17 / 13 / 8	19 / 16 / 10	21 / 18 / 12
24" x 24"	0.520	VOLUME (CFM)	200	400	600	800	1000	1200
		STATIC PRESSURE (in. w.g.)	.004	.022	.061	.129	.228	.365
		NOISE CRITERIA	<15	19	31	40	46	>50
		THROW (ft. at 50 / 100 / 150 fpm)	9 / 2 / <2	13 / 6 / 3	16 / 10 / 6	19 / 13 / 8	22 / 16 / 10	25 / 19 / 12

NOTES: Volume (CFM): standard air density and isothermal conditions
 Static Pressure: inches of water gauge
 Noise Criteria: based on room attenuation of 10dB (sound power level re: 10-12 watts) with 1 diffuser operating
 Throw: projection distance in feet from the diffuser discharge at which the maximum velocity has been reduced to the specified terminal velocity
 Terminal Velocity: maximum velocity (Vt) in feet per minute, at the specified distance from the outlet face