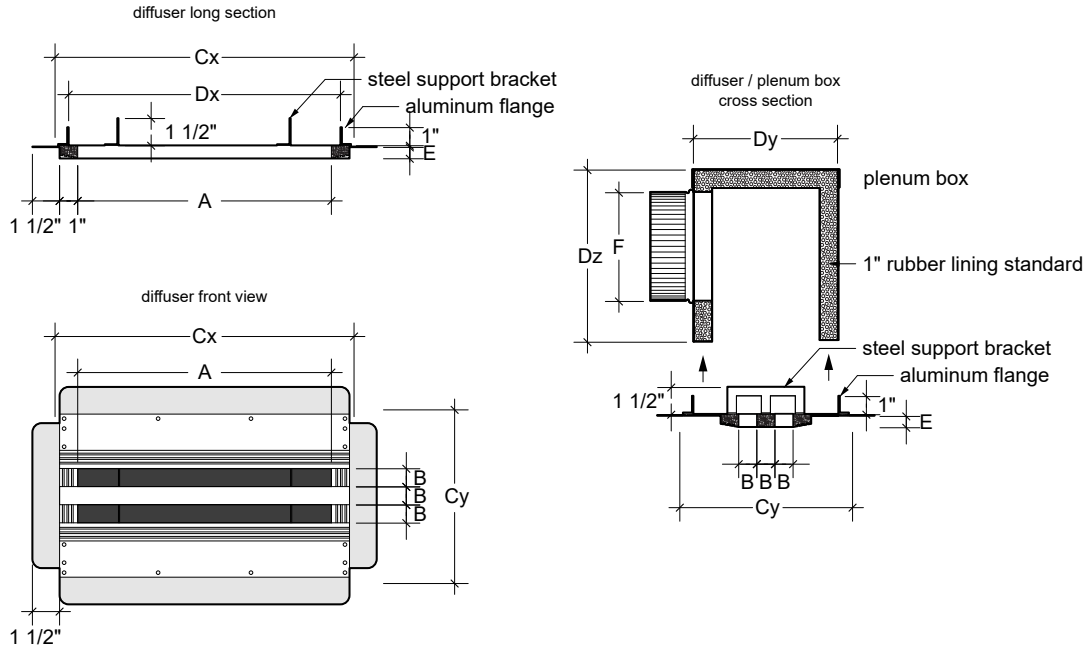


MODEL L200
ARCHITECTURAL LINEAR DIFFUSERS: 2 SLOT 90° OPENING
FLUSH MOUNT, TAPE AND SPACKLE INSTALLATION

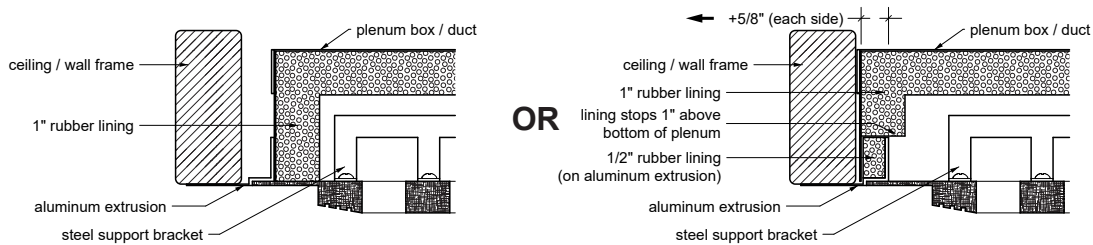


PRODUCT DIMENSIONS

	PRODUCT CODE	(A) DIFFUSER LENGTH	(B) SLOT / BAR WIDTH	(C) REQ. CEILING FRAME OPENING	(Dx, Dy) STANDARD PLENUM BOX / DUCT DIMENSIONS	(E) GYPSUM BOARD THICKNESS
<input type="checkbox"/>	L0002050	SPECIFY	1/2"	A + 2.5" x 8"	A + 1" x 5.5"	UP TO 5/8"
<input type="checkbox"/>	L0002075	SPECIFY	3/4"	A + 2.5" x 8.75"	A + 1" x 6.25"	UP TO 5/8"
<input type="checkbox"/>	L0002100	SPECIFY	1"	A + 2.5" x 9.5"	A + 1" x 7"	UP TO 5/8"
<input type="checkbox"/>	L0002150	SPECIFY	1 1/2"	A + 2.5" x 11"	A + 1" x 8.5"	UP TO 5/8"
<input type="checkbox"/>	L0002200	SPECIFY	2"	A + 2.5" x 12.5"	A + 1" x 10"	UP TO 5/8"

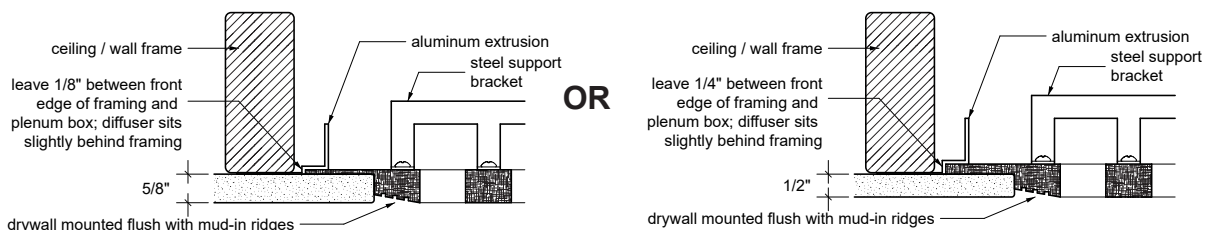
DIFFUSER SPECIFICATIONS AND OPTIONS

1) DIFFUSER INSTALLS INSIDE OR OUTSIDE OF PLENUM BOX OR DUCT



- STANDARD DIFFUSER-OUT INSTALLATION DIFFUSER-IN INSTALLATION (ADD 1.25" TO Dx AND 2.25" TO Dy)

2) DIFFUSER MADE FOR 5/8" OR 1/2" GYPSUM BOARD



- 5/8" GYPSUM BOARD

- 1/2" GYPSUM BOARD



MODEL L200
ARCHITECTURAL LINEAR DIFFUSERS: 2 SLOT 90° OPENING
FLUSH MOUNT, TAPE AND SPACKLE INSTALLATION

DIFFUSER ORDER DETAILS

PRODUCT CODE	(B) SLOT WIDTH	(A) DIFFUSER LENGTH	(E) GYPSUM BOARD THICKNESS	QTY	NOTES / OTHER SPECS
L0002050	1/2"				
	1/2"				
	1/2"				
L0002075	3/4"				
	3/4"				
	3/4"				
L0002100	1"				
	1"				
	1"				
L0002150	1 1/2"				
	1 1/2"				
	1 1/2"				
L0002200	2"				
	2"				
	2"				

OPTIONAL PLENUM BOX ORDER SPECIFICATIONS *

* THE TABLE BELOW SHOULD BE FILLED OUT IF YOU WISH TO PURCHASE PLENUM BOXES FROM INVI

** ADD 1.25" TO Dx AND 2.25" TO Dy OVER STANDARD DIMENSIONS IF YOU CHOSE DIFFUSER-IN INSTALLATION

(Dx) ** PLENUM LENGTH	(Dy) ** PLENUM WIDTH	(Dz) PLENUM HEIGHT (SPECIFY)	QTY	DUCT CONNECTION TYPE	(F) COLLAR SIZE	COLLAR LOCATION (TOP / SIDE / END)	NOTES / OTHER SPECS

CONTRACTOR	
PROJECT	
ADDRESS	
ENGINEER	
PREPARED BY	

InviAir
 67 Guernsey St
 Brooklyn, NY 11222
 917-909-0343



PERFORMANCE DATA

INVAIR 2-SLOT LINEAR DIFFUSER, 90° OPENING

ALL PERFORMANCE DATA FROM TESTING CONDUCTED BY INTERTEK GROUP, IN ACCORDANCE WITH ASHRAE 70-06



SLOT WIDTH	AREA FACTOR (Ak per ft)	PARAMETERS	PERFORMANCE					
0.5"	0.079	VOLUME (CFM / ft. of length)	25	42	50	67	75	92
		STATIC PRESSURE (in. w.g.)	.009	.024	.033	.056	.069	.100
		NOISE CRITERIA	<15	<15	<15	18	21	26
		THROW (ft. at 50 / 100 / 150 fpm)	10 / 4 / <2	17 / 12 / 6	20 / 17 / 8	29 / 26 / 14	34 / 31 / 18	45 / 41 / 25
0.75"	0.106	VOLUME (CFM / ft. of length)	38	63	75	100	113	138
		STATIC PRESSURE (in. w.g.)	.012	.031	.044	.077	.096	.141
		NOISE CRITERIA	<15	<15	<15	16	20	25
		THROW (ft. at 50 / 100 / 150 fpm)	12 / 6 / <2	20 / 15 / 6	24 / 19 / 9	34 / 29 / 15	38 / 33 / 18	49 / 43 / 26
1.0"	0.129	VOLUME (CFM / ft. of length)	33	67	83	100	133	167
		STATIC PRESSURE (in. w.g.)	.006	.024	.037	.052	.092	.142
		NOISE CRITERIA	<15	<15	<15	<15	17	24
		THROW (ft. at 50 / 100 / 150 fpm)	9 / 3 / <2	19 / 12 / 4	23 / 16 / 6	28 / 21 / 9	38 / 30 / 16	48 / 40 / 23
1.5"	0.179	VOLUME (CFM / ft. of length)	75	100	150	175	200	250
		STATIC PRESSURE (in. w.g.)	.016	.028	.061	.082	.106	.163
		NOISE CRITERIA	<15	<15	18	22	25	30
		THROW (ft. at 50 / 100 / 150 fpm)	17 / 8 / 2	24 / 12 / 5	36 / 22 / 10	42 / 27 / 14	48 / 32 / 18	58 / 44 / 27
2"	0.220	VOLUME (CFM / ft. of length)	100	133	167	200	233	300
		STATIC PRESSURE (in. w.g.)	.017	.028	.042	.059	.078	.123
		NOISE CRITERIA	<15	<15	<15	16	23	30
		THROW (ft. at 50 / 100 / 150 fpm)	20 / 6 / 2	29 / 10 / 5	37 / 14 / 8	44 / 20 / 12	51 / 26 / 16	>60 / 40 / 26

NOTES: Volume (CFM): standard air density and isothermal conditions

Static Pressure: inches of water gauge

Noise Criteria: based on room attenuation of 10dB (sound power level re: 10-12 watts) with 1 diffuser operating

Throw: projection distance in feet from the diffuser discharge at which the maximum velocity has been reduced to the specified terminal velocity

Terminal Velocity: maximum velocity (Vt) in feet per minute, at the specified distance from the outlet face

Actual samples used for testing measured 4 feet in length

NOISE CRITERIA (NC) ADJUSTMENTS FOR VARIOUS LENGTHS			
24" = -3 NC	48" = ±0 NC	60" = +1 NC	96" = +3 NC