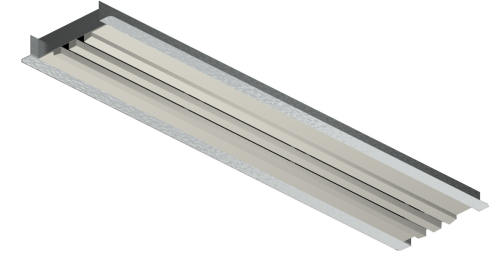




# PERFORMANCE DATA



## InviAir 2 Slot Linear Diffuser (90 Degree)

SLOT WIDTH	Terminal Velocity (fpm):											
		50, 100, 150	50, 100, 150	50, 100, 150	50, 100, 150	50, 100, 150	50, 100, 150	50, 100, 150	50, 100, 150	50, 100, 150	50, 100, 150	50, 100, 150
0.5"	Area	CFM/FT	17	25	33	42	50	58	67	75	83	92
	Factor (Ak)	SP (in., wg)	0.005	0.009	0.016	0.024	0.033	0.044	0.056	0.069	0.084	0.100
		NC	<15	<15	<15	<15	<15	<15	<15	18	21	23
	0.315	Throw (Ft.)	7,<2,<2	10,4,<2	13,8,3	17,12,6	20,17,8	25,22,11	29,26,14	34,31,18	39,36,21	45,41,25
0.75"	Area	CFM/FT	25	38	50	63	75	88	100	113	125	138
	Factor (Ak)	SP (in., wg)	0.005	0.012	0.020	0.031	0.044	0.059	0.077	0.096	0.117	0.141
		NC	<15	<15	<15	<15	<15	<15	<15	16	20	23
	0.423	Throw (Ft.)	8,2,<2	12,6,<2	16,10,4	20,15,6	24,19,9	29,24,12	34,29,15	38,33,18	44,38,22	49,43,26
1.0"	Area	CFM/FT	33	50	67	83	100	117	133	150	167	183
	Factor (Ak)	SP (in., wg)	0.006	0.014	0.024	0.037	0.052	0.071	0.092	0.115	0.142	0.171
		NC	<15	<15	<15	<15	<15	<15	<15	17	21	24
	0.514	Throw (Ft.)	9,3,<2	14,7,2	19,12,4	23,16,6	28,21,9	33,26,12	38,30,16	43,35,19	48,40,23	53,45,28
1.5"	Area	CFM/FT	50	75	100	125	150	175	200	225	250	275
	Factor (Ak)	SP (in., wg)	0.007	0.016	0.028	0.043	0.061	0.082	0.106	0.133	0.163	0.196
		NC	<15	<15	<15	<15	18	22	25	28	30	32
	0.717	Throw (Ft.)	10,4,<2	17,8,2	24,12,5	30,17,7	36,22,10	42,27,14	48,32,18	53,38,22	58,44,27	>60,50,32
2.0"	Area	CFM/FT	67	100	133	167	200	233	267	300	333	367
	Factor (Ak)	SP (in., wg)	0.008	0.017	0.028	0.042	0.059	0.078	0.099	0.123	0.148	0.176
		NC	31	34	36	37	39	40	41	42	42	43
	0.878	Throw (Ft.)	11,3,<2	20,6,2	29,10,5	37,14,8	44,20,12	51,26,16	58,32,21	>60,40,26	>60,48,31	>60,57,38

- Note:
1. Performance Data is Based on ASHRAE 70-06
  2. CFM: Standard air density and isothermal conditions.
  3. Static Pressure (SP): Inches of water gauge.
  4. Face Velocity: Face discharge velocity in feet per minute (fpm).
  5. Noise Criteria: NC Level is based on Room Attenuation of 10 db (Sound Power Level Re: 10-12 watts) with one diffuser operating.
  6. Terminal Velocity: Maximum velocity [Vt] in feet per minute at the specified distance from the outlet face.
  7. Throw: Projection distance in feet from the diffuser discharge at which the maximum velocity has been reduced to specified terminal velocity [Vt].
  8. Actual samples used for testing measured 4 feet in length.

NC Adjustment for Various Lengths				
Width (Inches)	24	48	60	96
NC (Delta)	-3	0	1	3