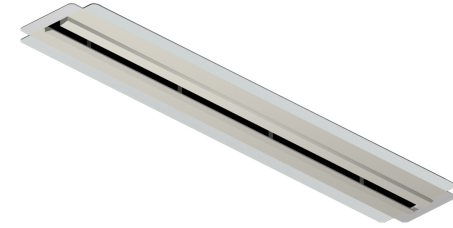




PERFORMANCE DATA



InviAir 1 Slot Linear Diffuser (90 Degree)

SLOT WIDTH	Terminal Velocity (fpm):												
		50, 100, 150	50, 100, 150	50, 100, 150	50, 100, 150	50, 100, 150	50, 100, 150	50, 100, 150	50, 100, 150	50, 100, 150	50, 100, 150		
0.5"	Area	CFM/FT	13	17	21	25	29	33	38	42	46	50	
	Factor (Ak)	SP (in., wg)	0.005	0.009	0.014	0.020	0.027	0.035	0.045	0.055	0.067	0.080	
		NC	<15	<15	<15	<15	<15	<15	<15	16	19	21	23
		0.137	Throw (Ft.)	5,<2,<2	9,2,<2	12,5,2	16,8,3	20,12,6	24,16,8	28,20,10	33,25,13	39,30,16	44,36,20
0.75"	Area	CFM/FT	19	25	31	38	44	50	56	63	69	75	
	Factor (Ak)	SP (in., wg)	0.007	0.012	0.018	0.026	0.035	0.045	0.057	0.071	0.085	0.101	
		NC	<15	<15	<15	<15	<15	15	18	20	22	24	
		0.206	Throw (Ft.)	11,3,<2	13,5,2	15,8,3	18,11,5	21,15,7	25,19,10	30,23,13	36,28,16	42,33,19	48,39,22
1.0"	Area	CFM/FT	25	33	42	50	58	67	75	83	92	100	
	Factor (Ak)	SP (in., wg)	0.008	0.014	0.022	0.032	0.043	0.056	0.070	0.086	0.104	0.123	
		NC	<15	<15	<15	<15	<15	<15	16	19	21	23	25
		0.291	Throw (Ft.)	15,6,2	16,8,3	18,10,5	20,13,7	23,17,9	27,21,12	32,25,15	38,30,18	45,36,21	52,42,25
1.5"	Area	CFM/FT	38	50	63	75	88	100	113	125	138	150	
	Factor (Ak)	SP (in., wg)	0.011	0.020	0.031	0.044	0.059	0.076	0.096	0.118	0.141	0.167	
		NC	<15	<15	<15	<15	<15	<15	17	20	22	24	26
		0.380	Throw (Ft.)	19,8,3	20,10,5	22,13,7	25,16,10	28,19,12	32,24,15	37,28,18	43,34,22	50,40,25	58,46,29
2.0"	Area	CFM/FT	50	67	83	100	117	133	150	167	183	200	
	Factor (Ak)	SP (in., wg)	0.015	0.025	0.039	0.056	0.075	0.097	0.122	0.150	0.180	0.213	
		NC	<15	<15	<15	<15	<15	<15	16	20	22	25	28
		0.468	Throw (Ft.)	18,6,3	21,8,6	25,11,9	29,15,12	34,19,15	39,24,18	44,29,21	50,36,25	56,42,29	>60,50,32

- Note:
1. Performance Data is Based on ASHRAE 70-06
 2. CFM: Standard air density and isothermal conditions.
 3. Static Pressure (SP): Inches of water gauge.
 4. Face Velocity: Face discharge velocity in feet per minute (fpm).
 5. Noise Criteria: NC Level is based on Room Attenuation of 10 db (Sound Power Level Re: 10-12 watts) with one diffuser operating.
 6. Terminal Velocity: Maximum velocity [Vt] in feet per minute at the specified distance from the outlet face.
 7. Throw: Projection distance in feet from the diffuser discharge at which the maximum velocity has been reduced to specified terminal velocity [Vt].
 8. Actual samples used for testing measured 4 feet in length.

NC Adjustment for Various Lengths				
Width (Inches)	24	48	60	96
NC (Delta)	-3	0	1	3