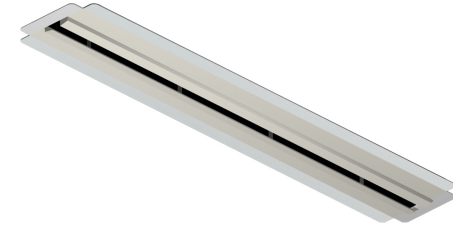




## PERFORMANCE DATA



### InviAir 1 Slot Linear Diffuser (45 Degree)

SLOT WIDTH	Terminal Velocity (fpm):											
		50	100	150	50	100	150	50	100	150	50	100
0.5"	Area	CFM/FT	19	25	31	38	44	50	56	63	69	75
	Factor (Ak)	SP (in., wg)	0.016	0.030	0.047	0.068	0.092	0.121	0.154	0.191	0.232	0.277
		NC	<15	<15	<15	<15	<15	<15	16	20	22	25
	0.103	Throw (Ft.)	7,2,<2	10,4,2	13,6,3	16,9,5	18,11,6	21,14,8	23,16,10	25,19,13	27,22,15	29,26,18
0.75"	Area	CFM/FT	28	38	47	56	66	75	84	94	103	113
	Factor (Ak)	SP (in., wg)	0.043	0.074	0.111	0.156	0.207	0.265	0.330	0.401	0.478	0.562
		NC	<15	<15	<15	<15	19	23	26	29	32	35
	0.138	Throw (Ft.)	9,4,2	12,6,4	15,8,5	18,11,7	20,13,9	23,16,11	25,19,13	27,21,15	30,24,18	31,28,20
1.0"	Area	CFM/FT	38	50	63	75	88	100	113	125	138	150
	Factor (Ak)	SP (in., wg)	0.061	0.103	0.155	0.216	0.285	0.364	0.450	0.545	0.648	0.759
		NC	<15	<15	18	23	28	31	35	38	40	43
	0.167	Throw (Ft.)	11,5,3	14,8,5	17,10,7	20,13,9	23,15,11	25,18,13	27,21,15	30,23,17	32,26,19	33,29,21
1.5"	Area	CFM/FT	56	75	94	113	131	150	169	188	206	225
	Factor (Ak)	SP (in., wg)	0.071	0.119	0.179	0.250	0.331	0.423	0.524	0.635	0.756	0.886
		NC	<15	22	29	35	39	43	47	>50	>50	>50
	0.231	Throw (Ft.)	13,7,4	17,10,6	20,13,9	24,16,11	27,18,13	29,21,15	32,24,17	34,27,19	36,29,21	37,32,23
2.0"	Area	CFM/FT	75	100	125	150	175	200	225	250	275	300
	Factor (Ak)	SP (in., wg)	0.044	0.077	0.120	0.171	0.230	0.299	0.376	0.462	0.557	0.660
		NC	<15	23	32	38	44	49	>50	>50	>50	>50
	0.289	Throw (Ft.)	14,8,4	19,11,6	23,15,8	27,18,10	30,21,12	33,24,15	36,26,17	38,29,19	39,31,22	40,34,24

- Note:
1. Performance Data is Based on ASHRAE 70-06
  2. CFM: Standard air density and isothermal conditions.
  3. Static Pressure (SP): Inches of water gauge.
  4. Face Velocity: Face discharge velocity in feet per minute (fpm).
  5. Noise Criteria: NC Level is based on Room Attenuation of 10 db (Sound Power Level Re: 10-12 watts) with one diffuser operating.
  6. Terminal Velocity: Maximum velocity [Vt] in feet per minute at the specified distance from the outlet face.
  7. Throw: Projection distance in feet from the diffuser discharge at which the maximum velocity has been reduced to specified terminal velocity [Vt].
  8. Actual samples used for testing measured 4 feet in length.

NC Adjustment for Various Lengths				
Width (Inches)	24	48	60	96
NC (Delta)	-3	0	1	3