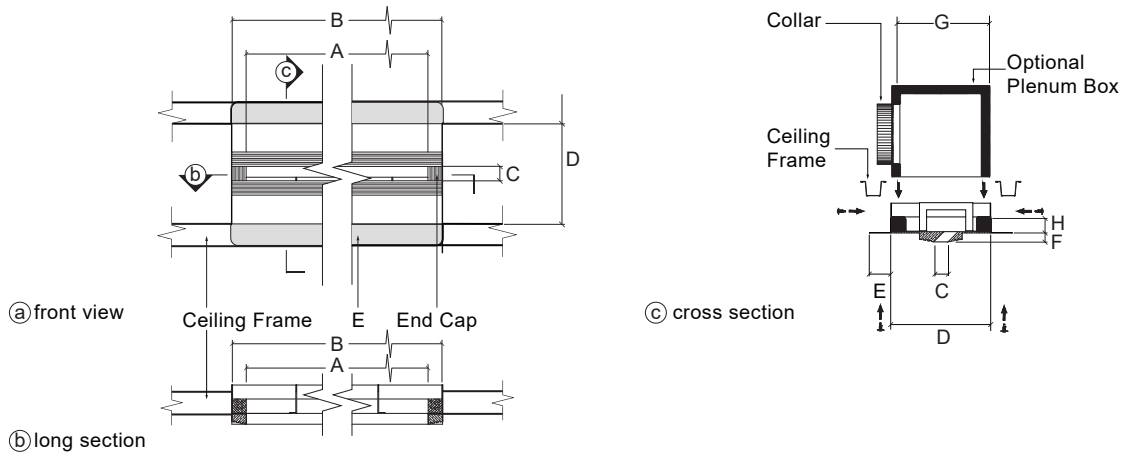




ARCHITECTURAL LINEAR DIFFUSERS MODEL #
L4501075



KEY FEATURES:

- Tape and spackle installation
- ASTM E-84 Class A rated

NOTES:

- Individual sections can be delivered up to 72" long. Longer spans will consist of sections butted together and joined along steel flanges
- Product Length includes end caps.
- Slide plenum box into vertical flanges and screw 1" above product frame
- Plenum box should be made 1" shorter than desired final height
- 1" foam insulation lining on product edges

PRODUCT DIMENSIONS

| (A) DIFFUSER LENGTH (SPECIFY) | (B) PRODUCT LENGTH (A + 2") | # SLOTS | QUANTITY | (C) SLOT WIDTH | (D) REQ. CEILING FRAME OPENING (C + 6 1/2") | (E) STEEL FLANGES | (F) GYPSUM BOARD THICKNESS (SPECIFY) |
|--|--------------------------------------|---------|----------|----------------------|--|-------------------------|---|
| | | 1 | | 3/4" | 7 1/4" | 1.5" | |
| | | 1 | | 3/4" | 7 1/4" | 1.5" | |
| | | 1 | | 3/4" | 7 1/4" | 1.5" | |
| | | 1 | | 3/4" | 7 1/4" | 1.5" | |
| | | 1 | | 3/4" | 7 1/4" | 1.5" | |

OPTIONAL PLENUM BOX SPECIFICATIONS

| PLENUM LENGTH (PRODUCT LENGTH B LESS 1/4") | (G) PLENUM WIDTH | QUANTITY | PLENUM HEIGHT (SPECIFY) | DUCT CONNECTION TYPE | COLLAR SIZE | COLLAR LOC. (TOP/ SIDE/END) | VOLUME DAMPER TYPE | VOLUME DAMPER SIZE |
|--|------------------------|----------|-------------------------------|----------------------------|----------------|-----------------------------------|--------------------------|--------------------------|
| | 6 1/2" | | | | | T S E | | |
| | 6 1/2" | | | | | T S E | | |
| | 6 1/2" | | | | | T S E | | |
| | 6 1/2" | | | | | T S E | | |
| | 6 1/2" | | | | | T S E | | |

| | |
|-------------|--|
| CONTRACTOR | |
| PROJECT | |
| ADDRESS | |
| ENGINEER | |
| PREPARED BY | |

InviAir
67 Guernsey St
Brooklyn, NY 11222
917-909-0343