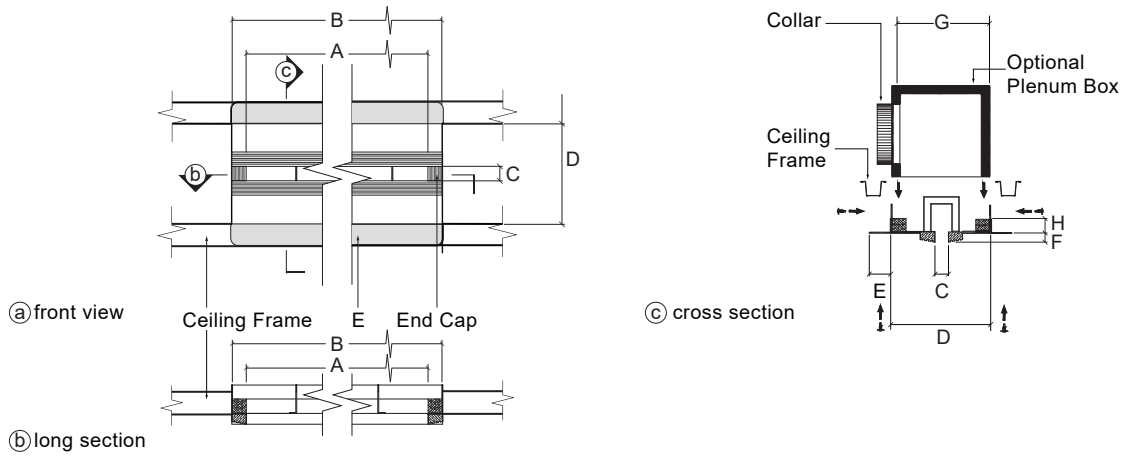




ARCHITECTURAL LINEAR DIFFUSERS MODEL #
L0001200



KEY FEATURES:

- Tape and spackle installation
- ASTM E-84 Class A rated

NOTES:

- Individual sections can be delivered up to 72" long. Longer spans will consist of sections butted together and joined along steel flanges
- Product Length includes end caps.
- Slide plenum box into vertical flanges and screw 1" above product frame
- Plenum box should be made 1" shorter than desired final height
- 1" foam insulation lining on product edges

PRODUCT DIMENSIONS

(A) DIFFUSER LENGTH (SPECIFY)	(B) PRODUCT LENGTH (A + 2")	# SLOTS	QUANTITY	(C) SLOT WIDTH	(D) REQ. CEILING FRAME OPENING (C + 6 1/2")	(E) STEEL FLANGES	(F) GYPSUM BOARD THICKNESS (SPECIFY)
		1		2"	8 1/2"	1.5"	
		1		2"	8 1/2"	1.5"	
		1		2"	8 1/2"	1.5"	
		1		2"	8 1/2"	1.5"	
		1		2"	8 1/2"	1.5"	

OPTIONAL PLENUM BOX SPECIFICATIONS

PLENUM LENGTH (PRODUCT LENGTH B LESS 1/4")	(G) PLENUM WIDTH	QUANTITY	PLENUM HEIGHT (SPECIFY)	DUCT CONNECTION TYPE	COLLAR SIZE	COLLAR LOC. (TOP/ SIDE/END)	VOLUME DAMPER TYPE	VOLUME DAMPER SIZE
	7 3/4"					T S E		
	7 3/4"					T S E		
	7 3/4"					T S E		
	7 3/4"					T S E		
	7 3/4"					T S E		

CONTRACTOR	
PROJECT	
ADDRESS	
ENGINEER	
PREPARED BY	

InviAir
67 Guernsey St
Brooklyn, NY 11222
917-909-0343